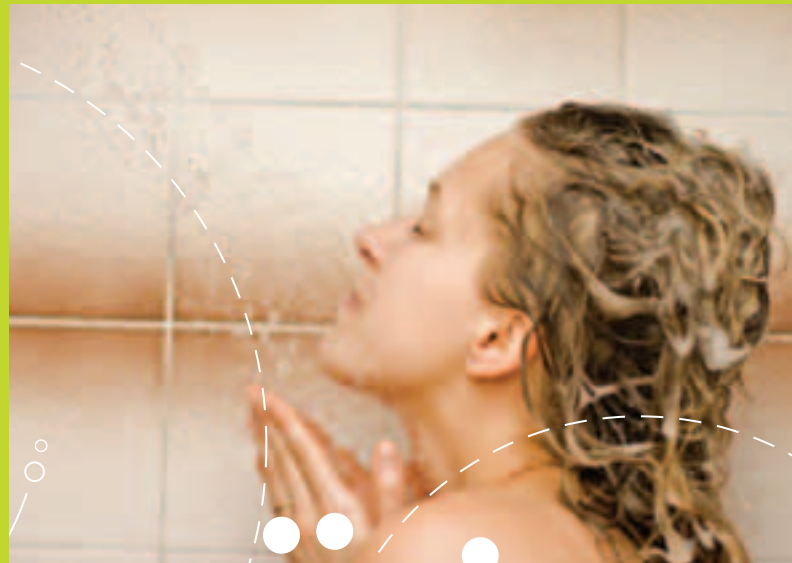


Shower-save

Conventional energy solutions



Shower-Save

On average, 90% of a property's hot water is used for showering. Most of that heat goes straight down the drain. Shower-Save is a simple heat recovery system, which is capable of reclaiming up to 60% of the heat that would normally be lost down the drain when you shower. That means that the cost of a shower both financially and in carbon emissions is only 40% of what it would be without the Shower-Save installed.

Where can a heat exchanger be used?

A heat exchanger can be used in any building where hot water runs into a drain i.e. in homes, apartments, hotels, swimming pools.

Social Housing

Shower-Save heat recovery systems are also ideal for Social Housing projects:

1. Simple to install and no maintenance requirements
2. Further reduce a building's CO2 emissions
3. Unlike solar panels they work all year round

Commercial buildings

Heat exchangers can be implemented into industrial processes which discharge warm water waste. A typical and efficient application of this would be reclaiming heat from the waste water of dishwashers in hotels. There are many benefits of installing Shower-save products, a few of which are outlined on the right:

Save money	The low initial outlay results in a very short payback period compared to other technologies.
Reduce your carbon foot print	Shower-Save will save between 300kg and 1000kg of carbon dioxide emissions per year, depending on how much you shower and what fuel you heat your water with.
Meet environmental targets	The Shower-Save has proved so popular in Holland where it was developed, as a very cost effective way to meet environmental targets, that it is now installed in 20% of new houses.
Reliability	Simple, zero maintenance design with no moving parts. Copper construction means the system should last for many years.
Performance	Official test figures show that the Shower Save can recover over 60% of the energy used when showering.

Advantages:

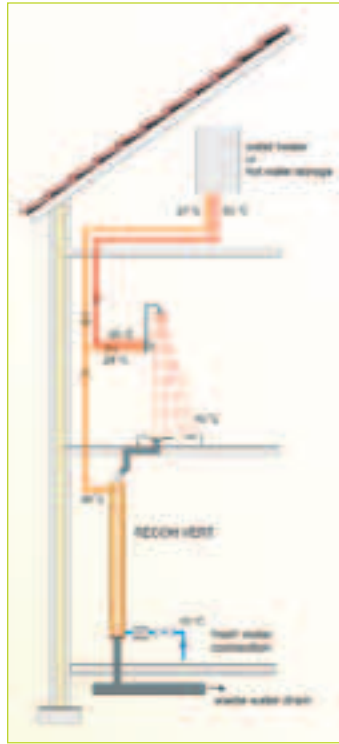
- Low investment
- High energy savings
- Short payback period
- Easy to install
- Maintenance free
- Reliable
- Long life span
- No pumps or controllers
- No electricity required
- Will shortly be included in Appendix Q to SAP

Shower-save

Conventional energy solutions

The Recoh-vert

- The Recoh-vert is designed to reduce energy consumption for domestic hot water. The hot waste water used during showering, passes the heat exchanger on its way down the drain. The heat is exchanged with the water from the pipe enroute to both the water heater and the shower.
- The Recoh-vert is 2.1 metres in length and must be mounted in a vertical position. It is therefore only suitable for installation where the shower is on the first floor.
- The Recoh-vert is a double walled/pipe heat exchanger. The inner pipe, with a diameter of 50mm, is the waste water drain pipe. The waste water clings to the inner surface of this pipe and flows downwards as a thin, high-velocity film. This allows good heat exchange to be achieved. The cold water mains, to be pre-heated flows upwards through the annular space between both pipes.
- Due to the high levels of efficiency, A household energy usage for hot water can be reduced by up to 60%.
- The system is a straight forward, simple design which does not use pumps or controllers. It is made of copper, and therefore has a long working life.



The Recoh-tray

- The Recoh-tray is a heat exchanger for use in downstairs showers. It includes a high quality Bette shower tray, and can be mounted underneath a special shower tray without increasing the overall height.
- The system is designed to reduce energy consumption during domestic hot water usage. The hot water passes the heat exchanger on its way down the drain. Heat is exchanged with the water from the mains water en route, to both the water heater and the shower.
- The heat exchanger holds less than one litre, meaning that the exchanger starts working almost immediately after showering has started.
- Recoh-Tray is a straightforward, simple design which does not require pumps or controllers. It is made of copper, and therefore has a long working life.
- Due to the high efficiency levels of the system, energy requirements for instant hot water can be reduced by up to 50%.



Recoh-Multivert

The Recoh-Multivert is suitable for use in commercial applications such as swimming pools, leisure centres, residential homes and hotels.

A commercial installation consists of the following equipment:

- Heat exchanger
- Drain unit
- Regulating volume flow

The design and Installation of a commercial heat recovery system is unique to each individual project, and should be discussed in detail with a qualified installer.